





## 1 About Us

- 1 Water moves us
- 2 25 years of innovation
- 4 Who we are

## 2 Splashpad<sup>®</sup>

- 8 Overview
- 10 Explora
- 12 Watergarden
- 14 Toons
- 16 Nautical
- 18 Sea Silhouette
- 20 Contemporary
- 22 Classic
- 24 Ground Sprays
- 26 Water Journey<sup>™</sup>

## 3 Playable Fountains

- 30 Overview
- 32 Lumiflow
- 33 Watermark<sup>™</sup>

## 4 Elevations<sup>™</sup>

- 36 Overview
- 38 Elevations<sup>™</sup>
- 42 PlayNuk<sup>™</sup>
- 44 PoolPlay<sup>™</sup>

## 5 Waterslides

- 48 Overview
- 50 Family Fun Slides
- 52 First Adventure Slides
- 54 Big Splash Slides

## 6 Water Management

- 58 Overview
- 60 Recirculation
- 62 SmartFlow<sup>™</sup>
- 64 MaestroPro<sup>™</sup>

## 7 Expertise

- 66 Overview
- 67 Product Innovations
- 68 World-Class Manufacturing
- 69 Our Services



# Water moves us

**We understand how every drop, stream, and splash shapes the world around us. By harnessing the transformative power of water, Vortex creates play experiences for children to develop, communities to flourish, and businesses to thrive. We exist to have an impact—one that lasts long after families are dried off.**

8,000

Projects  
worldwide

50

Countries  
served

100+

Awards  
& honors

“

Every one of our products combines science, education, abstract design, and a bit of magic to create meaningful experiences. Water makes playscapes extra special for families. It promotes free thinking and unstructured games. The experience of playing in water isn't like tossing a ball around or shaping a sandcastle—we don't move water; water moves us.

—Stephen Hamelin, President of Vortex

# 25 years of innovation

More than two decades after pioneering the Splashpad®, our innovative approach to water play has helped communities, businesses, and families around the world grow. Today, our award-winning installations span 50 countries and 5 continents.

# Who we are



## Family-centric innovators

We take a people-first approach.

We begin every project by getting to know the families you're servicing and thinking creatively about how we can help them grow.



## Involved partners

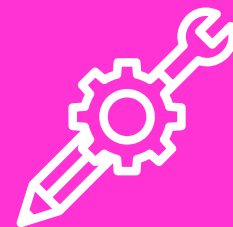
We are your committed business partners throughout every stage of your project, with a deep understanding of different markets and venues. Our experts cover all angles, making the journey easy.





## Sustainability experts

Our innovative Water Management solutions reduce your environmental footprint, work with your budget, and attend to your consumers' needs to ensure your project's success.



## Creative thinkers

Our diverse background in engineering, creative design, and water choreography makes us the best in the business at creating imaginative and powerful aquatic experiences.

# Splashpad®

by  VORTEX



Paseo Marítimo Antonio Banderas | Málaga, Spain





**Splashpad®**  
by  VORTEX

# The world's leading aquatic playscape

Boasting more than 250 interactive features and 10 signature collections, Splashpad® offers endless opportunities to customize, expand, and evolve your venue. With colorful, open-ended designs and imaginative water choreography, Splashpad® revolutionized how families play in urban spaces, waterparks, and resorts worldwide.

See our Splashpad® projects at [vortex-intl.com](http://vortex-intl.com)



Base de Loisirs du Lac de Férie | Penne-d'Agenais, France

## Inclusive water play

With its zero-depth layout and accessible play events, Splashpad® makes it easy for anyone to participate. Additionally, the unique solution includes distinct bay areas for toddlers, teens, and families. Each area interacts with the next, prompting multigenerational play as well as consistent foot traffic in and around the play zone.

## Iconic and imaginative

The more attractive and iconic the features of a play area are, the farther from home families are willing to travel. Splashpad® is specifically designed to pop from its surroundings and leave a vivid impression. The solution employs striking color palettes, eye-catching water choreography, and a perfect balance of sun and shade to draw in a crowd.

### Key benefits



Designed for zero-depth



Scalable over time



Fully customizable



Valois Park | Pointe-Claire, Quebec, Canada

# Explora

The Splashpad® Explora collection pairs magical water effects with different sized orbs that kids can push, pull and spin. The result is a series of play events that get kids moving as they manipulate how the water moves around them.

Discover the entire collection at [vortex-intl.com](http://vortex-intl.com)

## A deeper level of engagement

These highly kinetic products help develop motor skills and keep children of all ages engaged. Sections for little ones use softer sprays to promote sensory interactions, whereas high-energy features for older children encourage more movement.



Helio N°2



Luna N°2



Gilroy Gardens | Gilroy, California, USA

# Watergarden

From the mystical water effects of the Aqualien Flowers to the exciting streams of the Bloom, the Watergarden collection mimics nature's lush greenery. Every leaf, flower, and stem making up the collection has a distinct personality.

Discover the entire collection at [vortex-intl.com](http://vortex-intl.com)



## A return to nature

Vivid colors, interactive water effects, and organic designs offer families a return to nature. In the minds of young explorers, these water features transform your Splashpad® into a magical rainforest, jungle, or pond.



Aqualien Flower N°3



Leaf N°3



Paterna Municipal Pool | Paterna, Spain

## Toons

Larger-than-life creatures populate the play area! The colorful, iconic Toons collection catches the eye of families and, with its abstract designs, appeals to the creativity of young adventurers.

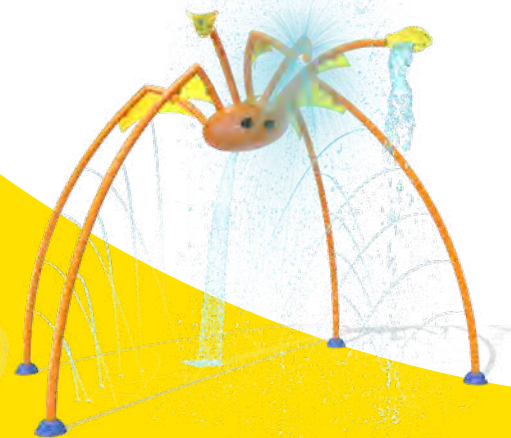
Discover the entire collection at [vortex-intl.com](http://vortex-intl.com)

## Open-ended designs

Is it a snake? Maybe it's a tall bird or, perhaps, a sea monster. Rather than craft a collection of critters that perfectly resemble their real-world counterparts, Vortex's designers instead replicate the "essence" of these things. This design approach encourages children's imaginations to fill in the blanks.



Fish N°1



Crab N°1



Riverfront Park | South Haven, Michigan, USA

# Nautical

Ahoy, matey! The Nautical collection will send your seafarers on a thrilling voyage.

Scaled for big adventures, impressive elements such as our pirate ship will be an enticing focal point of your Splashpad®.

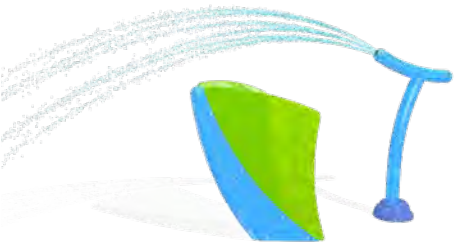
Discover the entire collection at [vortex-intl.com](http://vortex-intl.com)

# All aboard!

Adults and kids never tire of legendary stories of High Seas! Interactive nautical features like sailboats, anchors and helms stimulate the imagination for an action-packed play experience.



Boat Wheel N°1



Sailboat



Acquaria Aquatic Center | Sommo, Italy

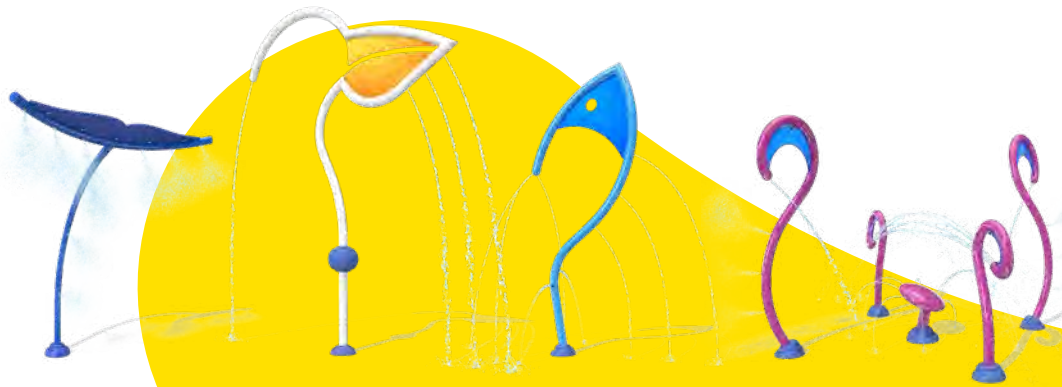
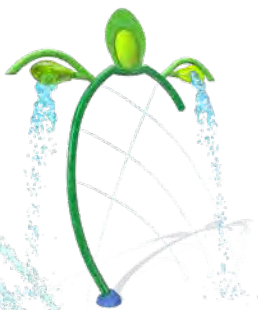
## Sea Silhouette

The Sea Silhouette collection invites children to take a deep dive and discover a whole other world waiting under the sea! The features encourage creative play and create stunning visual effects.

Discover the entire collection at [vortex-intl.com](http://vortex-intl.com)

## A deep-sea adventure!

Run through the whale for an instant soak. Spin the pelican for spiral water effects, or rotate the octopus' tentacles 360 degrees! Which turtle fin will dump water first? Our fully immersive designs will keep excitement levels high!





JBR The Walk | Dubai, U.A.E.

## Contemporary

The Splashpad® Contemporary collection features an extensive list of sleek, urban designs that integrate into any landscape.

Each product sprays, rains, and twists with signature energy. The whimsical shapes put on a water ballét of sorts, introducing little ones to the dynamism of aquatic play.

Discover the entire collection at [vortex-intl.com](http://vortex-intl.com)



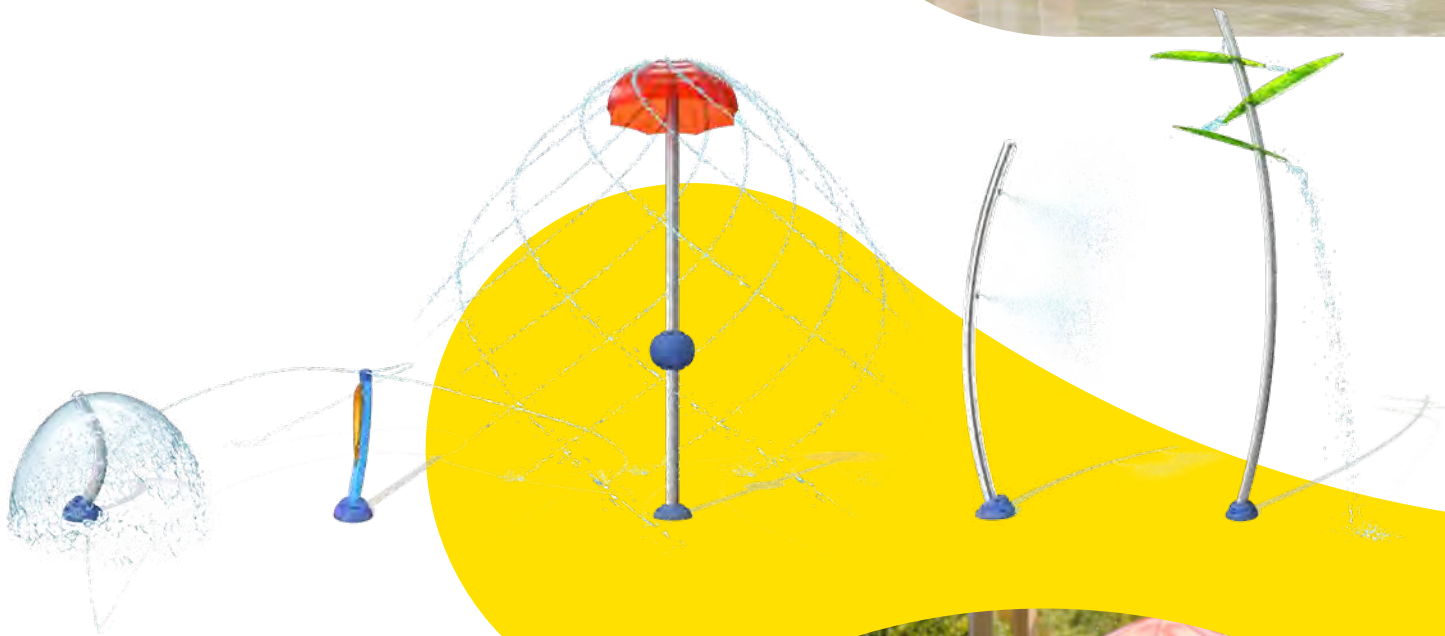


## A modern dance

Combining overhead water events with exciting cannon sprays, the Contemporary collection inhabits your Splashpad® with various sensations and high interactivity. Complementing the products, SeeFlow™ accessories move water in magical ways while projecting imaginative patterns below.



Bamboo Twin Cannon



Spiroo



Parc Casavant-Desrochers | Saint-Charles-Borromée, Quebec, Canada

## Classic

The Classic collection consists of water events that range from contemplative to fully immersive. Some are exploratory, while others are more kinetic or sensorial. Combining these experiences in different ways helps attract a wider demographic and extend engagement times.

Discover the entire collection at [vortex-intl.com](http://vortex-intl.com)

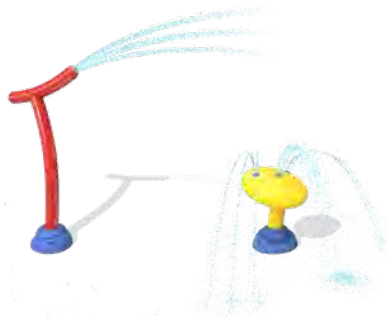


## A full spectrum of play experiences

The Classic collection boasts all the iconic, interactive features that make Splashpad® so dynamic. Water domes, spray loops, dumping buckets, and sparkly archways provide the little ones with a full spectrum of play experiences.



Aqua Dome N°1



Rainbow N°2



Ayuntamiento Onati | Onati, Spain

## Ground Sprays

As the collection name suggests, these sprays project from the surface level of the Splashpad®. Beautifully choreographed effects range from soft mists to powerful volcanoes. The discrete designs help build anticipation and promote active play.

Discover the entire collection at [vortex-intl.com](http://vortex-intl.com)

# The magic of water play

Ground-level jets keep kids engaged! With its geysers, water tunnels and directional jets, the Ground Sprays collection showcases the many ways water moves—and moves us! The versatile water effects bring your Splashpad® to life.



Water Wall N°1



Directional Jet N°1



Den Blå Planet Aquarium | Copenhagen, Denmark

A close-up photograph of a water play product, a large, blue, angular structure with a central channel and a small green cup. Water is flowing through the structure, creating a dynamic scene. The structure is set on a white surface with water splashing around it.

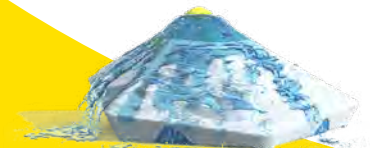
## Water Journey™

Water Journey™ consists of 6 unique play products. Each one invites children to manipulate their surroundings as they would in the great outdoors. These ground-level designs can stand alone as singular formations or be combined to create integrated experiences.

Discover the entire collection at [vortex-intl.com](http://vortex-intl.com)

## Nature's way to play

Combine the tranquil sensations of a zero-depth Tide Pool with the flowing current of the Labyrinth, or even the thrill of a competitive Water Race. Why not enhance your Splashpad® with Pico, Alto and Hop—highly tactile water events inspired by mountains and stepping stones!



# Playable Fountains

by  VORTEX



Pioneer Park | Mesa, Arizona, USA







# Playable Fountains

by  VORTEX

## Rethinking fountains

We've reinvented fountains, transforming them into immersive, multi-sensory experiences for all generations. Combining spectacular visuals and interactive effects, our Playable Fountains create magic that keep families wide-eyed day or night.

See our Playable Fountains projects at [vortex-intl.com](http://vortex-intl.com)



## Showtime meets playtime

An innovative twist on the dry-deck fountain, Playable Fountains comprise individual jets with embedded LEDs. At sundown, our Playable Fountains remain an immersive experience, with users of all ages interacting with the lighting and water.

## Tailor-made aquatic spectacles

Playable Fountains and Watermark™ help your facility transform and evolve over time. The magic happens through a tailor-made combination of design, lighting, and technology, giving your project a unique signature. The possibilities are endless, and so is the fun!

### Key benefits



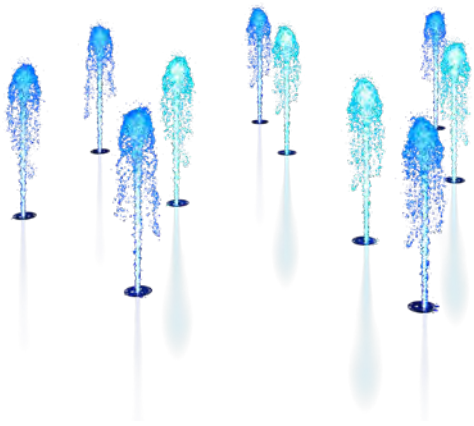
Designed for zero-depth



Scalable over time



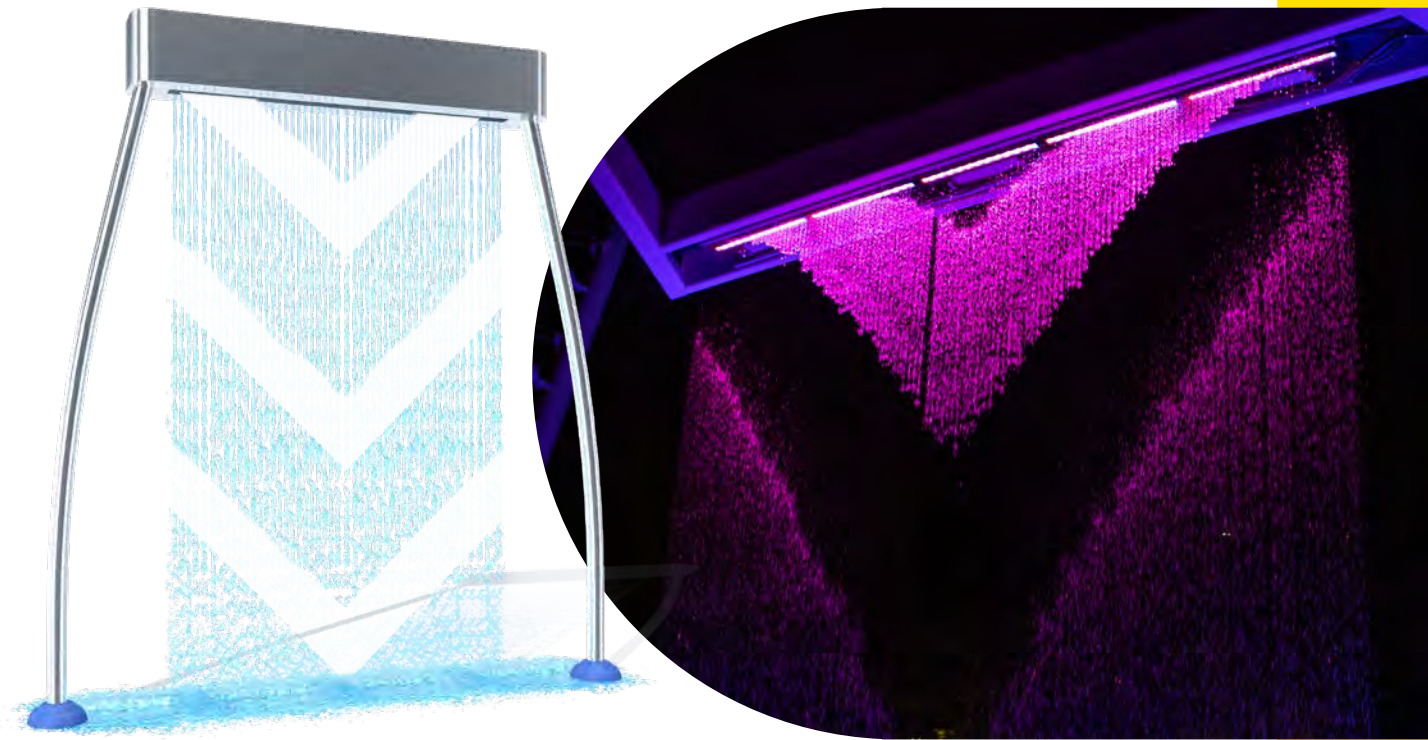
Fully customizable



## Lumiflow

Available in multiple configurations, Lumiflow creates a refreshing visual experience thanks to its all-in-one solution consisting of a water jet column, LED technology and an integrated drain.

Discover the entire collection at [vortex-intl.com](http://vortex-intl.com)



## Watermark™

A cutting-edge interactive feature that creates logos, patterns and words by manipulating the water flow. Our digitally controlled water display technology allows you to create interactive patterns and a unique ambiance for your venue.

Discover the entire collection at [vortex-intl.com](http://vortex-intl.com)

Elevations™

by VORTEX



Playa Montroig Camping Resort | Tarragona, Spain





**Elevations™**  
by  **VORTEX**

## Multi-level water playgrounds

Elevations™ condense the excitement and diversity of an entire waterpark into a complete multi-story play zone. Fully customizable, these all-in-one designs employ a vast array of interactive water features, engaging kids on all levels.

See our Elevations™ projects at [vortex-intl.com](http://vortex-intl.com)





Royal Caribbean International | Perfect Day at CocoCay, Bahamas

## Water structures to boost engagement

Every Elevations™ feature has been meticulously designed to optimize engagement on all levels. The force and flow of water streams, the choreography of small footsteps around each deck—built into every nook and cranny is a play event yielding higher traffic, longer stays, and return visits.

## Flexible and adaptable

With their modular building-block system, Elevations™ can adapt to almost any exterior or interior site ranging from a small PlayNuk™ to a sprawling aquatic destination. Elevations™ can also be retrofitted onto existing facilities to easily refresh amusement parks, hotels and resorts, campgrounds, and municipal aquatic centers.

### Key benefits



Designed for zero-depth and pools



Easy facility integration



Pre-engineered or custom designs



Grove Resort & Spa | Orlando, Florida, USA

## Elevations™

**Draw in a crowd with a pirate ship adventure, transform your water playground into a tropical rainforest, or take little ones on an interplanetary journey. Elevations™ offer a full spectrum of theming opportunities that make brand integration easy.**

Discover the entire collection at [vortex-intl.com](http://vortex-intl.com)

# Give your imagination free rein

Suited for pools, zero-depth play areas, indoor facilities, or outdoor attractions, Elevations™ range anywhere from the size of a small jungle gym to a sprawling aquatic destination! Fully customizable, the solution features dozens upon dozens of interactive play events to make your own.



## Optimized adventure in every square foot

Designs combine the anticipation of dumping water buckets, the rush of water slides, the competitive spirit of spray cannons, and so much more. Built to your facility's specs, these imaginative configurations breathe life into amusement parks, hotel and resorts, campgrounds, and municipal aquatics centers.







Valois Park | Pointe-Claire, Québec, Canada

## PlayNuk™

Identifying a play-gap in the 2-5 age group, Vortex's designers invented a new breed of Elevations™. PlayNuk™ scales down accessories, softens sprays, and adds more lower-level interactions to make accessibility easy for younger adventurers.

Discover the entire collection at [vortex-intl.com](https://vortex-intl.com)

# An all-in-one experience

PlayNuk™ is distinct from other Elevations™ solutions in that it's a preconfigured design. Each of its highly engaging play accessories is already in place the moment it arrives, making it an all-in-one experience that doesn't require guesswork or accessory shopping.





Club Calimera Es Talaial | Cala D'Or, Spain

# PoolPlay™

Transform your pool environment into an exciting immersive experience for young children! Our imaginative PoolPlay™ designs seamlessly fit with our Splashpad® and Elevations™ solutions to keep kids moving and coming back for more.

Discover the entire collection at [vortex-intl.com](http://vortex-intl.com)



## A low-depth activity hub

Our signature cascades and lazy river elements elevate pool play to a whole new level, creating game opportunities that turn your pool area into a low-depth activity hub.



# Waterslides

by  VORTEX







**Waterslides**

by  **VORTEX**

# Make a bigger splash

Get every family member off the beach towel and into the water. Offering a complete line of standard and custom solutions for all ages, Vortex Waterslides offer smooth, comfortable rides with exceptional manufacturing and durability.

See our Waterslides projects at [vortex-intl.com](http://vortex-intl.com)



Eagle Lakes Community Park Aquatic Center | Naples, Florida, USA

## A slide for every facility

Customizable to your site requirements, our waterslides can stand alone or be integrated with our Elevations™ or Splashpad® for an extra dose of adrenaline. Drop splashdown pool slides provide an exhilarating final plunge, while our runouts provide a safe alternative for pool-less venues.

## PrecisionRide™ technology

Vortex offers PrecisionRide™ technology, a molding process with a high strength-to-weight ratio and shiny look on both sides of the flume. Offering the smoothest possible ride, PrecisionRide™ slides are practically frictionless with long-lasting finishes. Premium gelcoats maintain color season after season.

### Key benefits



Designed for zero-depth and pools



Easy facility integration



Pre-engineered or custom ride paths



Laurie-Eve-Cormier Aquatic Center | Boucherville, Quebec, Canada

## Family Fun Slides

**Vortex understands that shared experiences leave a bigger impact. Our Family Fun Slides optimize play between different age groups. More family interaction means more return visits to your inclusive destination.**

Discover the entire collection at [vortex-intl.com](https://vortex-intl.com)

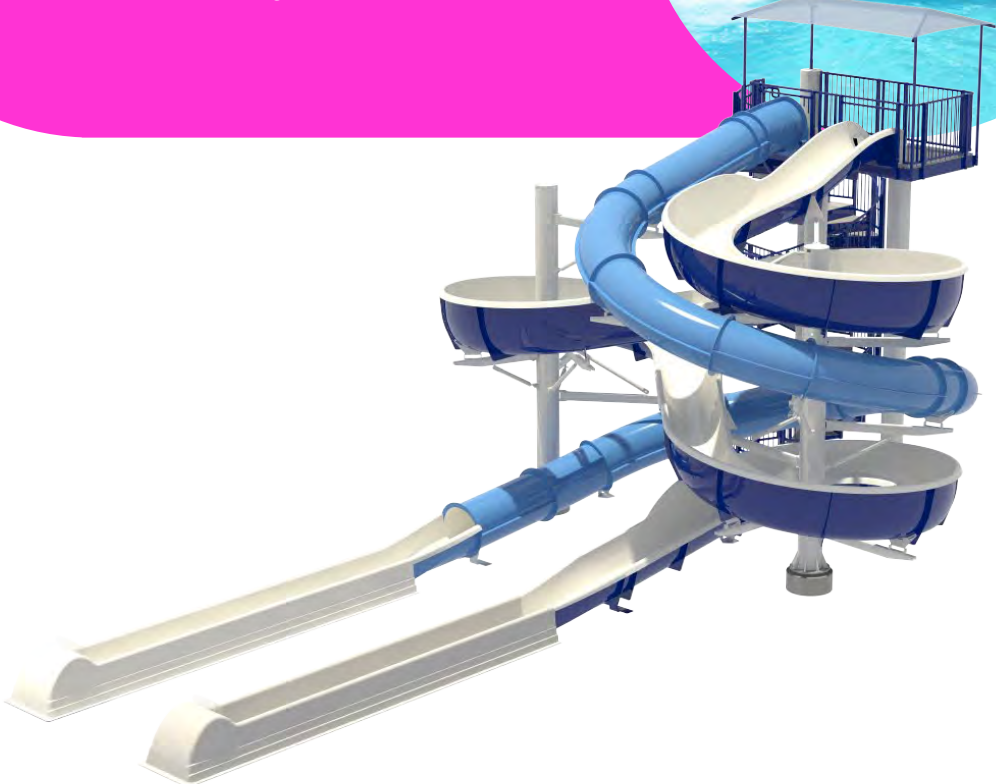
## Raft Slides

Raft Slides optimize splashes and excitement, but at the same time keep younger passengers comfortable thanks to the smooth descent of rafts and tubes.



## Body Slides

Available in a wide range of configurations, these classic slides remain among the most versatile. Open or closed flume designs give your venue the twists and turns families are looking for.





Michigan's Adventure Half-Pint Paradise | Muskegon, Michigan, USA

## First Adventure Slides

The more adventure you offer your pint-size visitors, the more incentive moms and dads have to make a return visit. Engineered specifically for younger guests, these body slides accommodate those who may be slightly hesitant about their inaugural ride.

Discover the entire collection at [vortex-intl.com](http://vortex-intl.com)



## Wide Slides

Outstretched lanes let the little ones slide next to each other and even allow parents to ride along. Wide enough to accommodate four on a single turn, these attractions let everyone join in on the fun!



## Kids Slides

These body slides help kids graduate from toddler rides to the real deal. Open- or closed-flume designs offer just the right level of thrills while providing a safe and smooth ride.



## Kids Racers

These single lane or side-by-side slides give guests the speed they need without being too intense for first-timers.





Blue Heron Bay | Independence Lake, Michigan, USA

## Big Splash Slides

Every experience is even better when you kick the adrenaline up a notch! Fully customizable and with higher intensity ride paths, Big Splash body slides will be a sure hit for the entire family, maximum thrills guaranteed!

Discover the entire collection at [vortex-intl.com](http://vortex-intl.com)

## Speed Slides

When it comes to speed, nothing beats these classic flume drops and snaking designs. Highly customizable, these Speed Slides bring in the crowds and keep the spectators gathered 'round.



## Drop Slides

These versatile designs feature highly customizable drop-offs! They can be engineered for speed, sharp turns, and big plunges.



## AquaTwist™

These high-speed, tubular body slides offer an exhilarating corkscrew sensation. The signature interlocking design promotes competition and catches the attention of your park's many thrill-seekers.



# Water Management

by  VORTEX







# Water Management

by  VORTEX

## The heart of every successful project

Beneath the eye-catching features of your attraction is an intricate system that controls water usage and quality, and ensures that your attraction is safe, efficient and sustainable over time. Our water management solutions are specifically engineered to meet your project's demands.

Learn more about Water Management at [vortex-intl.com](http://vortex-intl.com)



## Systems suited for all project types

Vortex has developed two industry-leading water management systems: recirculation and SmartFlow™. Depending on your project's unique requirements, each solution is engineered and manufactured in our in-house facility, and therefore superior in quality to site-built systems.

## Be in control of every drop

With on-demand activation options, nozzle technologies and our MaestroPro™ water controller, our innovative technologies provide a sustainable solution to ensure your project's success. Customizable and remotely accessible, these control systems help you manage your resources with greater efficiency.

### Key benefits



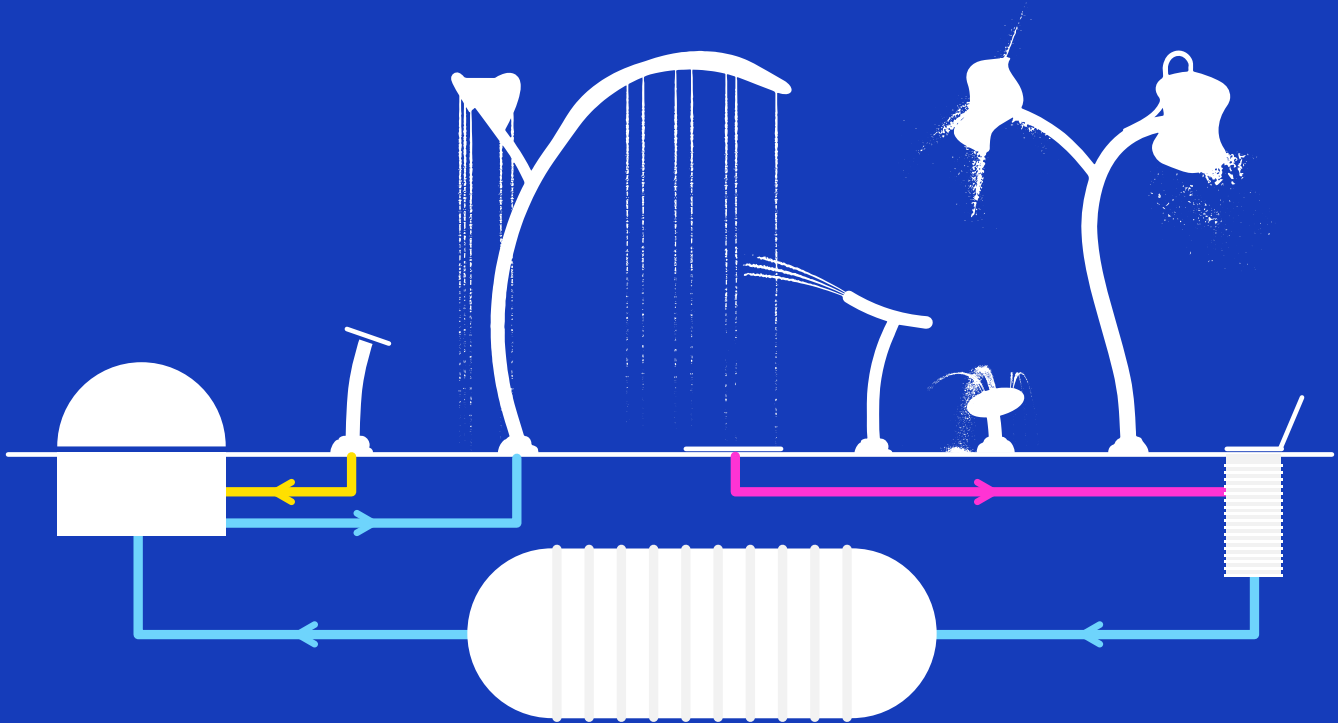
Remote access control systems



Sustainable systems



Pre-engineered or custom designs



## Recirculation

This closed-circuit system filters and reuses the very same water flowing from your play area. Simplifying installation and keeping quality top of mind, recirculation systems are engineered to your project requirements and factory built and tested.

Find out more about Water Management at [vortex-intl.com](http://vortex-intl.com)



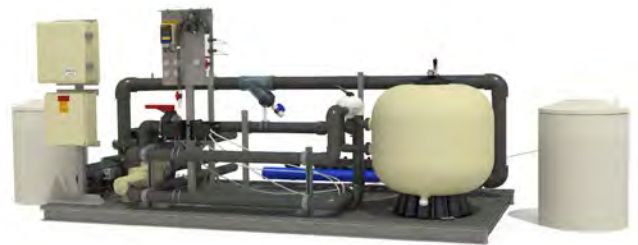
## Recirculation Command Centers

Recirculation command centers consolidate essential water management components, including the water distribution system, controller, and filtration system. They disinfect while offering continuous water-quality monitoring. Distinct housing options are available:



### Domepack Command Center

Durable and weatherproof, this enclosed command center easily blends into your playscape's surroundings. It's the perfect housing for outdoor facilities.



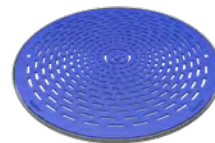
### Modular Command Center

The feature loop, filter loop, and controller are all installed on-site in a modular system that saves space and makes access easy. It's even possible for the components to be preassembled onto a single fiberglass skid. These command centers are ideal for indoor facilities or playscapes with existing housing.



### On-Demand Activation

Water only flows when users press the activator. Easy to operate. No moving parts.



### PlaySafe™ Drain

Primary debris filter. Stainless steel, skid-resistant, and safe. High flow-rate capacity.



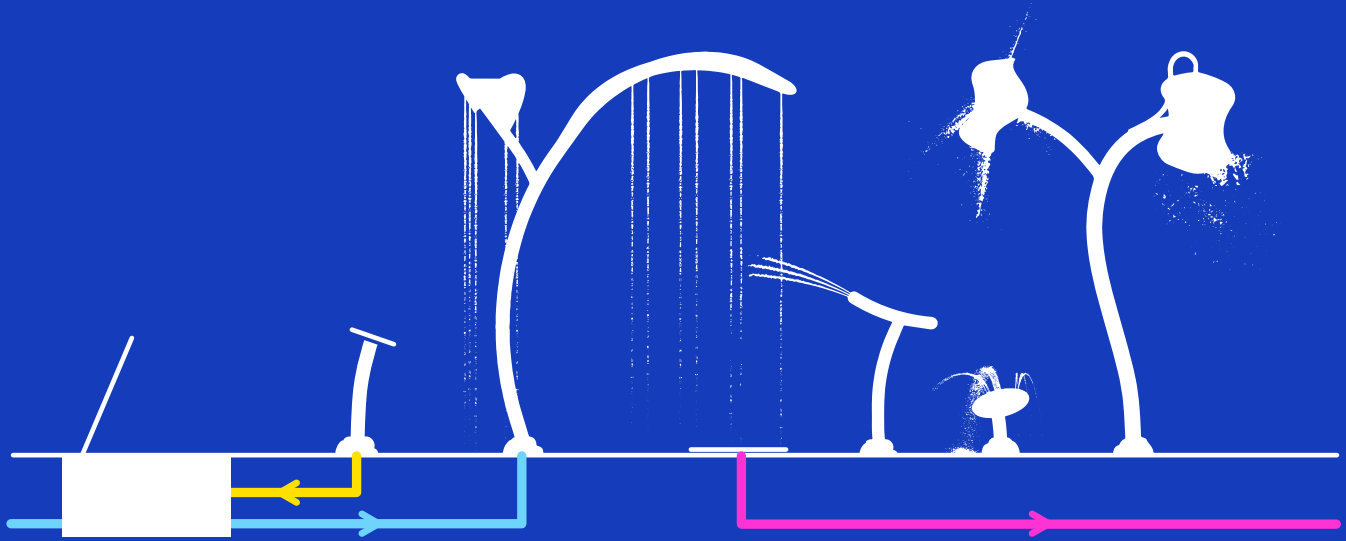
### Debris and Rainwater Control

Strains effluent water. Rainwater Control maintains water balance and prevents chemical waste.



### Water Containment System

Fully equipped, below-surface system in reinforced polymer. Lockable access hatch and ladder.



## SmartFlow™

These systems make use of the potable water that runs through your play area. After releasing from your playscape, the effluent water returns to the municipal treatment system, or transfers into a holding tank and then gets repurposed to nourish vegetation.

Find out more about Water Management at [vortex-intl.com](http://vortex-intl.com)

# SmartFlow™ Command Centers

Available in four unique designs and housing options, these command centers combine the water distribution system and controller to make accessibility easy:



## SmartPoint™ Command Center

Conveniently housed under the drain, the compact design accommodates a Splashpad® with 10 features or less. The all-in-one solution also serves as an activator.



## Equipment Vault Command Center

Installed underground, this housing solution features a stainless-steel access hatch and stepdown grate.



## Equipment Cabinet Command Center

Suited for both indoor and outdoor facilities, this stainless-steel cabinet ensures every component is within arm's reach.



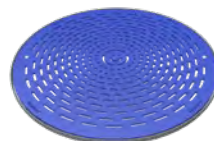
## Wall Mount Command Center

Every component you need to access is mounted on easy-to-install wall brackets. The space-conscious solution is perfect for indoor facilities.



## On-Demand Activation

Water only flows when users press the activator. Easy to operate. No moving parts.



## PlaySafe™ Drain

Primary debris filter. Stainless steel, skid-resistant, and safe. High flow-rate capacity.



# MaestroPro™

## INTELLIGENT WATER CONTROL

Meet MaestroPro™, the central system that allows you to control all water functions. Using its intuitive interface, you can activate products, orchestrate lighting and synchronize water features.

Find out more about Water Management at [vortex-intl.com](http://vortex-intl.com)



## Remote access

With the Link™ web interface, you can access MaestroPro™ remotely from your mobile device to control a single or multiple locations. MaestroPro™ reduces maintenance visits to your facility. Full online support keeps things running smoothly.



## Customization

Control countless features with custom sequencing capabilities. Various timing and water patterns, LED lighting, and different effects create stunning choreography!



## Resource management

This smart technology uses flow control, ensuring the right amount of water flows to each feature based on a defined sequence.

# Expertise

We are passionately committed to seeing your project thrive, from conception to performance.

## → Play & Entertainment

Our pioneering solutions are purposefully designed to promote stimulating play for all ages and abilities. Our innovative twist on traditional water attractions creates immersive stories that keep families engaged and moving.

## → Project Development

Our project consultants take the time to understand your objectives, scope and budget. We set milestones and timelines to deliver your project on time.

## → Innovation

Vortex is an industry leader with its iconic designs and technologies. Our product designers, industrial engineers and technicians work together to push the limits of our industry.

## → Project Execution

We owe our world-class manufacturing excellence to our highly skilled team and our vertically integrated facility where we have control over our production from A to Z.

Product Innovations

The details make the difference. Vortex solutions are bolstered by smart tech that enhances play experiences, elevates safety, and makes the expansion of your facility easier and more cost-effective.



**ToeGuard™**  
Soft-touch elastomer design that protects toes from anchoring hardware. Available in one or two pieces.



**SafeSwap™**  
Ground caps that facilitate product additions. Easily add future play elements, or move products from one location to another at a significantly reduced cost.



**SeeFlow™**  
These creative accents combine bright colors, water, and sunlight to produce colorful reflections around the play-area.



**PlayStart™ Activator**  
An on-demand activator that saves water. No moving parts and low voltage for safe fun. A single-cable connection makes installation easy.



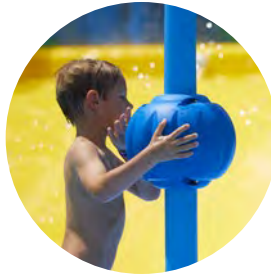
**PodSpray™**  
Sends water to another feature when stepped on or pressed. Connected features spin faster, spray farther, dance higher.



**TwistNozzle™**  
Lets kids control the direction of water jets. Teaches cause and effect and motor skills. Durable and resistant to UV rays and chemicals.



**TurnTec™**  
Rotating play feature for kids of all ages and abilities. Adjustable spray zone lets you control the area where water starts and stops.



**TwirlTec™**  
Create a spiraling overhead water effect by spinning the globe. The friction-free design teaches cause and effect.

Discover all our Product Innovations at [vortex-intl.com](http://vortex-intl.com)

## World-Class Manufacturing

We practice lean manufacturing and use stainless and galvanized steel sourced from North America. Our warranties back up our commitment to building durable, safe aquatic play solutions, all while offering lead times and delivery times that are the best in the industry.

### Certified to globally recognized standards



**ISO 9001:2015**  
Quality Management  
Systems (QMS)



**CWB / CSA W47.1**  
Canadian standards  
for Fusion Welding  
of Steel



**EN 1090-1**  
Factory Production  
Control



**UL 508A**  
Enclosed Control  
Panel Builder  
Certified Controller  
(File# E179407)



**Federal  
Communications  
Commission**  
Vortex MaestroPro™  
Water Playground  
Controller is  
FCC Certified



Vortex also conforms to other applicable standards including but not limited to:  
ASTM F2783 & F2376, GB 18168 & 8408. Inquire for your specific project.

### Conforming to industry standards



**ASTM F2461**  
Standard Practice  
for Manufacture,  
Construction,  
Operation, and  
Maintenance  
of Aquatic Play  
Equipment



**CE**  
European Union  
directives and  
standards



**CSA Z614**  
Children's Playground  
Equipment standard



**EN 17232, EN 1069-1**  
European  
Standardization  
Organizations for  
Water Play Equipment  
and Features, and  
Water Slides

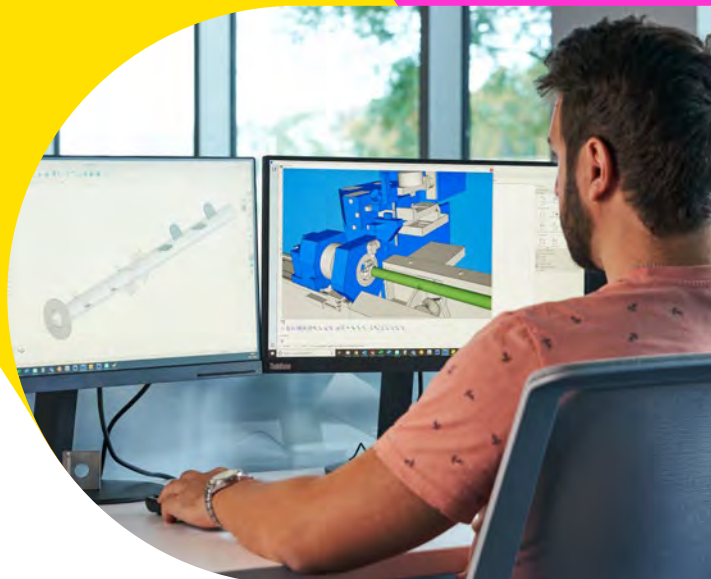


**AS 4685**  
Australian Standards  
for Playgrounds  
including Design,  
Installation,  
Maintenance,  
and Operation  
of Playgrounds



## Our Services

We are passionately committed to seeing your project thrive, from conception to maintenance. We are your involved business partners at every stage of your project to help you attract, engage and retain your visitors, no matter your venue.



- ✓ **Site and capacity planning**
- ✓ **3D project design and construction documentation**
- ✓ **Installation and supervision by Vortex-certified installers**
- ✓ **Onsite training**
- ✓ **Ongoing maintenance packages**
- ✓ **Winterization and start-up services**
- ✓ **Customer care center and tech support**
- ✓ **Local representation and direct sales force in 5 continents**



## A sustainable approach

When you're designing for future generations, sustainability matters. Constantly innovating, we develop advanced water management systems that reduce water and energy consumption. Built to last, everything from our aquatic play solutions to our catalogs is made with durable materials and a commitment to responsible forestry.





**vortex-intl.com**

**Vortex Aquatic Structures International**  
info@vortex-intl.com

1.877.586.7839 (USA & Canada)  
+1.514.694.3868 (International)

© 2021 Vortex Aquatic Structures International  
M121E.0001R00